

HabasitLINK[®]

M3840 Roller Top 1.5"

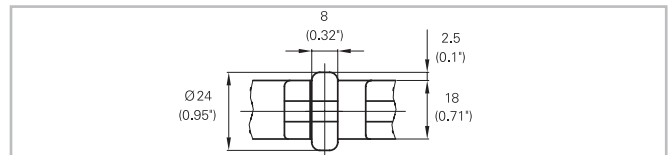
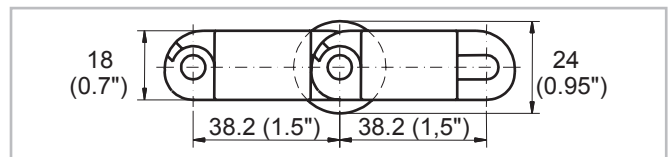
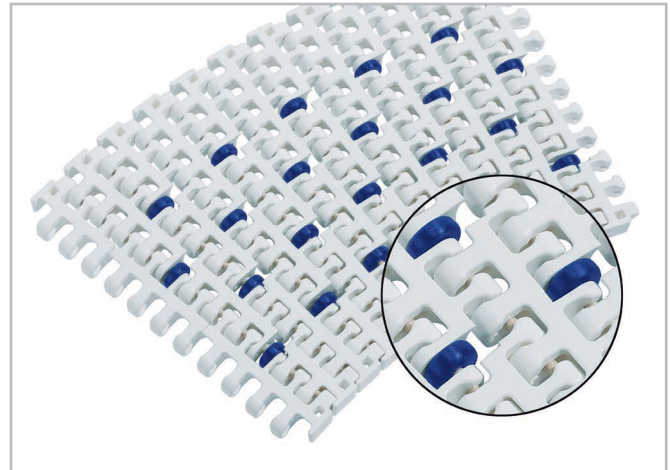


Your Source For Habasit
Belting And Chain

www.StilesEnterprises.com • 1-800-325-4232

Description

- For radius and straight conveying
- 31% open area; largest opening 7x19 mm (0.27"x0.75")
- Roller lateral spacing see table belt data
- Free edge 60 mm (2.4")
- Rollers row spacing 38.2 mm (1.5")
- For low back pressure, wearstrips placed between rollers
- For product driven application wearstrips are placed directly under the rollers
- Excellent for cooling and draining
- Open hinge
- Food approved materials available
- Rod diameter 6 mm (0.24")



Belt data

Belt material		POM
Rod material		PA
Roller material		POM
Roller lateral spacing per row	mm / inch	100 / 4
Roller offset next row	mm / inch	50 / 2
Roller dimension diameter / width	mm inch	Ø 24 / 8 Ø 0.94 / 0.31
Nominal tensile strength F' _N straight run	N/m lb/ft	25000 1712
Nominal tensile strength F _N in curve ⁽¹⁾	N lbf	2000 450
Temperature range	°C °F	-40 - 93 -40 - 200
Belt weight m _B	kg/m ² lb/sqft	11.8 2.42

⁽¹⁾ For b₀ > 450 mm (18") higher values admissible. Refer to LINK-SeleCalc

Diameter of idling rollers (minimum)		Diameter of support rollers (minimum)		Diameter for gravity take-up and center drive rollers (minimum)		Backbending radius for elevators without side guards or hold down devices (minimum)		Backbending radius for elevators with sideguards or hold down devices (minimum)	
mm	inch	mm	inch	mm	inch	mm	inch	mm	inch
60	2.4	100	4	150	6	150	6	250	10

Use the largest possible backbending radius for elevators with side guards or hold down devices.